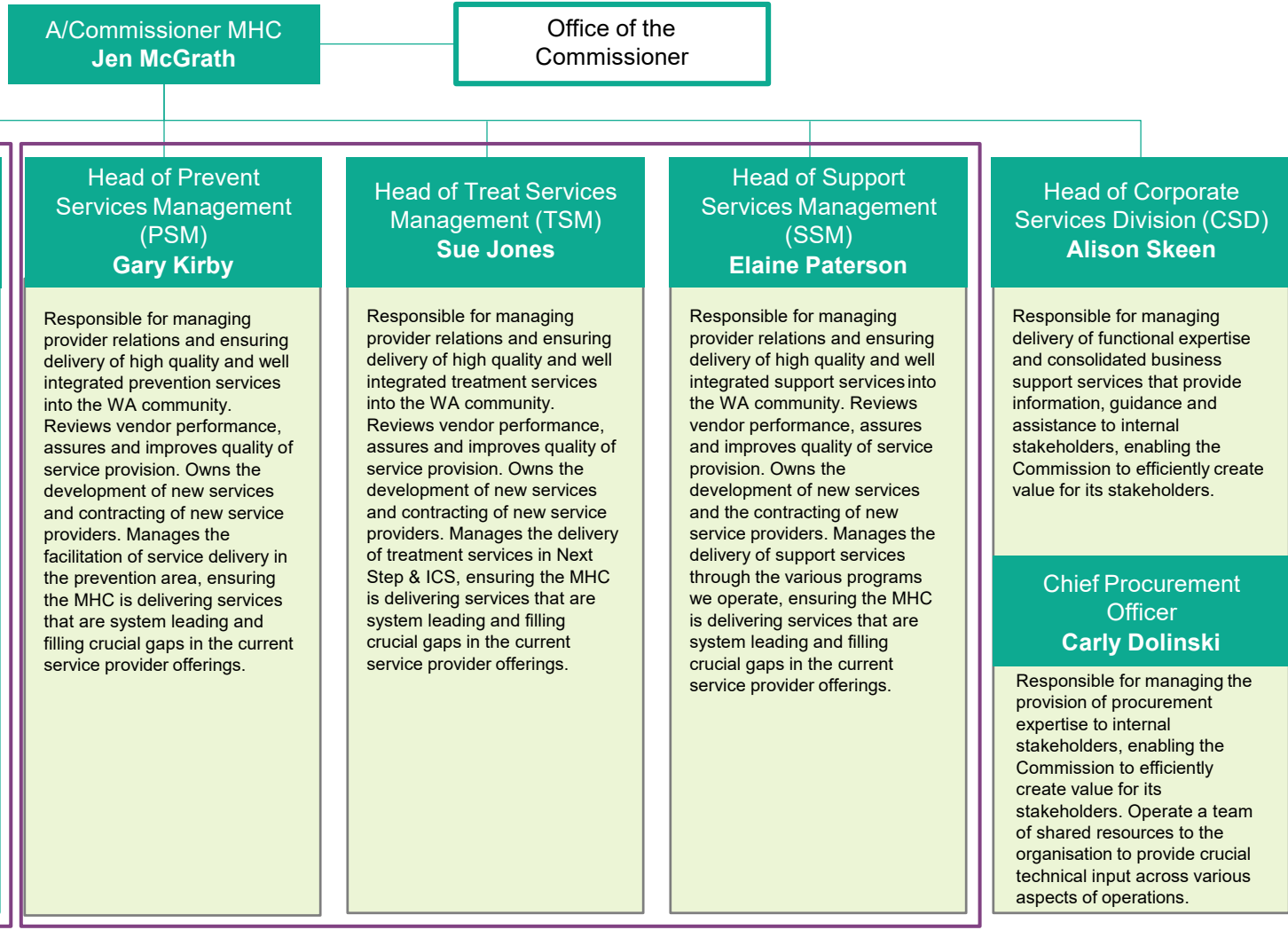


# Interim leadership team



**Head of Strategy & Reform Division (SRD)  
David Axworthy**

Responsible for coordinating development of internal organisational strategies, plans and budgets to drive system reform while continuing to ensure delivery of the spectrum of core services into the WA community.

**Head of System Development Division (SDD)  
Kim Lazenby**

Responsible for supporting development of new and enhanced services, while working to align stakeholders across the system. Works closely with the CMOMH to strategically influence development of policies, regulations, laws and government approaches in relation to mental health and AOD.

**Head of Policy  
Amanda Hughes**

Responsible for managing policy for mental health and AOD, driving ongoing implementation and evaluation of the WA Mental Health Act 2014. Works closely with the CMOMH to strategically influence development of policies, regulations, laws and government approaches in relation to mental health and AOD.

**Chief Medical Officer Mental Health (CMOMH)  
Dr Sophie Davison**

Works closely with the leadership team and in particular the Head of System Development to provide clinical expertise, contribute to strategic planning and policy development, strengthen consumer and community focused clinical care, and liaise with non-government services to support system integration.

**Head of Prevent Services Management (PSM)  
Gary Kirby**

Responsible for managing provider relations and ensuring delivery of high quality and well integrated prevention services into the WA community. Reviews vendor performance, assures and improves quality of service provision. Owns the development of new services and contracting of new service providers. Manages the facilitation of service delivery in the prevention area, ensuring the MHC is delivering services that are system leading and filling crucial gaps in the current service provider offerings.

**Head of Treat Services Management (TSM)  
Sue Jones**

Responsible for managing provider relations and ensuring delivery of high quality and well integrated treatment services into the WA community. Reviews vendor performance, assures and improves quality of service provision. Owns the development of new services and contracting of new service providers. Manages the delivery of treatment services in Next Step & ICS, ensuring the MHC is delivering services that are system leading and filling crucial gaps in the current service provider offerings.

**Head of Support Services Management (SSM)  
Elaine Paterson**

Responsible for managing provider relations and ensuring delivery of high quality and well integrated support services into the WA community. Reviews vendor performance, assures and improves quality of service provision. Owns the development of new services and the contracting of new service providers. Manages the delivery of support services through the various programs we operate, ensuring the MHC is delivering services that are system leading and filling crucial gaps in the current service provider offerings.

**Head of Corporate Services Division (CSD)  
Alison Skeen**

Responsible for managing delivery of functional expertise and consolidated business support services that provide information, guidance and assistance to internal stakeholders, enabling the Commission to efficiently create value for its stakeholders.

**Chief Procurement Officer  
Carly Dolinski**

Responsible for managing the provision of procurement expertise to internal stakeholders, enabling the Commission to efficiently create value for its stakeholders. Operate a team of shared resources to the organisation to provide crucial technical input across various aspects of operations.