

Contacts

Diversion Officer:

My local support service:

Other useful information

The Parent and Family Drug Support Line is a non-judgemental telephone counselling, information and referral service for anyone concerned about another person's alcohol and drug use.

24 hours a day, 7 days a week:

Metro: (08) 9442 5050

Country: 1800 653 203

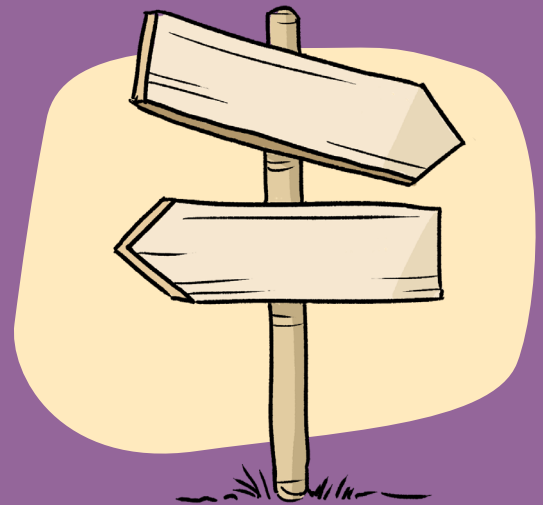
Visit mhc.wa.gov.au/getting-help to find a list of helplines, online chats and forums for more support and advice.



Government of **Western Australia**
Mental Health Commission

Alcohol and Other Drug Diversion Program

Information for family members,
friends or support people.



Has alcohol and other drug use led a family member or friend to court?

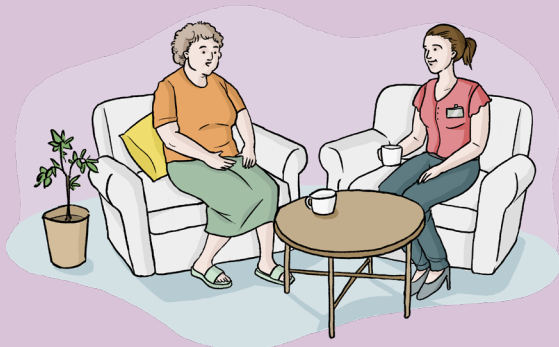
Has alcohol and other drug use caused conflict in your relationship?

Diversion Officers at the local court can link you with support services that can help your family get back on track.

What is happening for you?

Sometimes family members, friends or support people can be affected too. It can be a difficult time.

Looking after yourself is important.



Diversion Officers at the local court can refer you to free services so that you can:

- Talk about your situation in a private, non-judgemental way.
- Get professional advice and useful information about alcohol and other drug use, and how to best respond to your family member or friend.
- Talk to a trained parent volunteer with personal experience.
- Share coping and recovery strategies.

On arrival at Court

Make sure you arrive early to court and allow plenty of time for parking. You may be waiting for a few hours.

Who can help at Court?

- Court staff at the administration desk can provide advice and assistance.
- Duty Lawyers can provide advice about legal options and what to expect in court. People can ask to see a Duty Lawyer to represent them during the hearing.
- Diversion Officers talk with people who are impacted by their own or another person's alcohol and other drug use. They can link you with treatment and support services.
- The Court Orderly calls people to appear in any order.

In the courtroom

- No food or drink can be taken inside.
- Take off your hat and sunglasses.
- Switch off your mobile phone.
- Bow towards the Magistrate when you enter and exit.

Before you leave

- You may wish to check any paperwork your family member has been given for future court dates or other instructions.
- Court staff can assist if you have any questions.